

产品特点

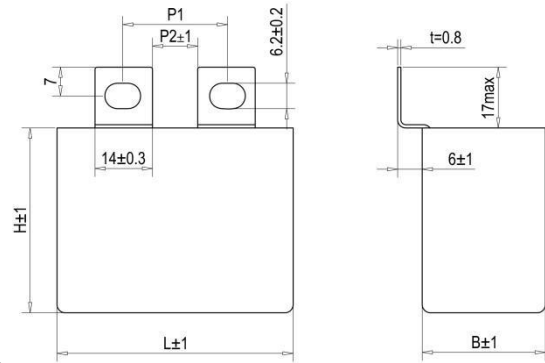
引用标准 : IEC 61071
 介质 : 金属化聚丙烯薄膜
 结构 : 干式无感结构, 塑料外壳封装, 树脂填充 (UL94 V-0)

电气特性

工作温度 : -40 °C 至 +105 °C
 容量范围 : 0.047 至 10μF
 额定电压 : 700 至 3000VDC
 容量偏差 : ±5% , ±10%
 损耗因素 : $\leq 6 \times 10^{-4}$ @ 1KHz , 20±5°C
 预期寿命 : 100,000 小时 @ Un, 70 °C (热点温度)
 极间耐压 : 1.5Un (DC) @ 10s, 20±5°C
 极壳耐压 : (1.5Un+1000)VAC, 最小 3000VAC (10s,50Hz)
 绝缘电阻 : (IR×Cn) 30000s (不超过 30GΩ), 100VDC (20±5°C), 1 分钟

应用

IGBT 突波吸收 嵌位



焊片规格

B.K.U.C.UF.CF.R.G.N.T.TF.E.D 等

可接受客户定制

特性参数

订货代码	容量 (μF)	尺寸(mm)			Du/dt (v/μs)	Ipeak (A)	Ls (nH)	IrDMS@60°C @10KHz (A)	ESR@100KHz (mΩ)
		L	B	H					
Un 700VDC , Urms 380VAC , Us 1050V									
DTM-700-1.0-&P#	1.0	42.5	24.5	27.5	325	325	≤25	15.0	4.3
DTM-700-1.2-&P#	1.2	42.5	24.5	27.5	325	390	≤25	16.0	3.1
DTM-700-1.5-&S#	1.5	42.5	22.0	30.0	325	487	≤25	18.0	3.5
DTM-700-2.0-&P#	2.0	42.5	33.5	35.5	325	650	≤25	22.0	3.2
DTM-700-2.0-&S#	2.0	42.5	28.0	37.0	325	650	≤25	21.5	3.2
DTM-700-2.2-&P#	2.2	42.5	33.5	35.5	325	715	≤25	22.5	2.4
DTM-700-2.2-&S#	2.2	42.5	28.0	37.0	325	715	≤25	22.0	2.4
DTM-700-2.5-&P#	2.5	42.5	33.5	35.5	325	812	≤25	23.0	2.5
DTM-700-2.5-&S#	2.5	42.5	28.0	37.0	325	812	≤25	22.5	2.5
DTM-700-3.0-&P#	3.0	42.5	33.0	45.0	325	975	≤25	26.0	2.4
DTM-700-3.0-&S#	3.0	42.5	30.0	45.0	325	975	≤25	25.5	2.4
DTM-700-3.3-&P#	3.3	42.5	33.0	45.0	325	1072	≤25	26.5	2.4
DTM-700-3.3-&S#	3.3	42.5	30.0	45.0	325	1072	≤25	26.0	2.4
DTM-700-3.5-&P#	3.5	42.5	33.0	45.0	325	1134	≤25	27.0	2.0
DTM-700-3.5-&S#	3.5	42.5	30.0	45.0	325	1134	≤25	26.5	2.0
DTM-700-4.0-&P#	4.0	57.5	30.0	45.0	220	880	≤35	27.0	2.3
DTM-700-4.0-&S#	4.0	42.5	33.0	45.0	325	1300	≤25	32.0	1.8
DTM-700-4.7-&P#	4.7	57.5	35.0	50.0	220	1034	≤35	31.0	2.1
DTM-700-4.7-&S#	4.7	57.5	30.0	45.0	220	1034	≤35	30.5	2.1
DTM-700-5.0-&P#	5.0	57.5	35.0	50.0	220	1100	≤35	31.0	2.5
DTM-700-5.0-&S#	5.0	57.5	30.0	45.0	220	1100	≤35	30.5	2.5
DTM-700-5.6-&P#	5.6	57.5	35.0	50.0	220	1232	≤35	32.0	2.0
DTM-700-6.8-&S#	6.8	57.5	35.0	50.0	220	1496	≤35	32.0	2.0
DTM-700-10.0-&S#	10.0	57.5	42.5	56.0	220	2200	≤35	33.0	1.8

特性参数

订货代码	容量 (μ F)	尺寸(mm)			Du/dt (v/ μ s)	Ipeak (A)	Ls (nH)	IrDMS@60°C @10KHz(A)	ESR@100KHz (m Ω)
		L	B	H					
Un 850VDC , Urms 450VAC , Us 1275V									
DTM-850-0.82-&P#	0.82	42.5	24.5	27.5	400	328	≤25	15.5	4.6
DTM-850-1.0-&P#	1.0	42.5	24.5	27.5	400	400	≤25	17.5	4.0
DTM-850-1.0-&S#	1.0	42.5	22.0	30.0	400	400	≤25	17.0	4.0
DTM-850-1.5-&P#	1.5	42.5	33.5	35.5	400	600	≤25	23.0	2.2
DTM-850-1.5-&S#	1.5	42.5	28.0	37.0	400	600	≤25	22.5	2.2
DTM-850-2.0-&P#	2.0	42.5	33.5	35.5	400	800	≤25	23.5	2.2
DTM-850-2.2-&P#	2.2	42.5	30.0	45.0	400	880	≤25	26.5	2.2
DTM-850-2.5-&P#	2.5	42.5	33.0	45.0	400	1000	≤25	27.0	2.9
DTM-850-2.5-&S#	2.5	42.5	30.0	45.0	400	1000	≤25	26.5	2.9
DTM-850-3.0-&P#	3.0	57.5	30.0	45.0	280	840	≤35	28.0	3.4
DTM-850-3.3-&P#	3.3	57.5	30.0	45.0	280	924	≤35	28.5	3.4
DTM-850-4.0-&P#	4.0	57.5	35.0	50.0	280	1120	≤35	29.5	2.1
DTM-850-4.7-&P#	4.7	57.5	35.0	50.0	280	1316	≤35	32.0	2.2
DTM-850-6.8-&S#	6.8	57.5	42.5	56.0	280	1904	≤35	33.0	1.7
Un 1000VDC , Urms 480VAC , Us 1500V									
DTM-1000-0.68-&P#	0.68	42.5	24.5	27.5	500	340	≤25	15.0	5.3
DTM-1000-0.75-&P#	0.75	42.5	24.5	27.5	500	375	≤25	15.5	4.7
DTM-1000-0.75-&S#	0.75	42.5	22.0	30.0	500	375	≤25	15.0	4.7
DTM-1000-1.0-&S#	1.0	42.5	28.0	37.0	500	500	≤25	17.0	3.5
DTM-1000-1.2-&P#	1.2	42.5	33.5	35.5	500	600	≤25	22.0	3.2
DTM-1000-1.2-&S#	1.2	42.5	28.0	37.0	500	600	≤25	21.5	3.2
DTM-1000-1.5-&P#	1.5	42.5	33.5	35.5	500	750	≤25	23.5	2.5
DTM-1000-1.75-&P#	1.75	42.5	33.0	45.0	500	875	≤25	23.5	2.1
DTM-1000-1.75-&S#	1.75	42.5	30.0	45.0	500	875	≤25	23.0	2.1
DTM-1000-2.0-&P#	2.0	42.5	33.0	45.0	500	1000	≤25	26.5	2.3
DTM-1000-2.2-&P#	2.2	57.5	30.0	45.0	350	770	≤35	26.5	2.7
DTM-1000-2.5-&S#	2.5	57.5	30.0	45.0	350	875	≤35	28.0	2.9
DTM-1000-3.0-&P#	3.0	57.5	35.0	50.0	350	1050	≤35	31.0	3.4
DTM-1000-3.3-&P#	3.3	57.5	35.0	50.0	350	1155	≤35	31.0	2.5
DTM-1000-5.0-&S#	5.0	57.5	42.5	56.0	350	1750	≤35	33.0	1.6
Un 1200VDC , Urms 500VAC , Us 1800V									
DTM-1200-0.22-&P#	0.22	42.5	24.5	27.5	650	143	≤25	11.5	12.8
DTM-1200-0.22-&S#	0.22	42.5	15.0	26.0	650	143	≤25	11.0	12.8
DTM-1200-0.33-&P#	0.33	42.5	24.5	27.5	650	210	≤25	12.0	8.9
DTM-1200-0.33-&S#	0.33	42.5	15.0	26.0	650	210	≤25	11.5	8.9
DTM-1200-0.39-&P#	0.39	42.5	24.5	27.5	650	254	≤25	13.0	7.3
DTM-1200-0.39-&S#	0.39	42.5	17.0	28.0	650	254	≤25	12.5	7.3
DTM-1200-0.47-&P#	0.47	42.5	24.5	27.5	650	306	≤25	14.0	7.0
DTM-1200-0.47-&S#	0.47	42.5	22.0	30.0	650	306	≤25	13.5	7.0
DTM-1200-0.56-&S#	0.56	42.5	22.0	30.0	650	364	≤25	14.0	5.3
DTM-1200-0.56-&P#	0.56	42.5	24.5	27.5	650	364	≤25	14.5	5.3
DTM-1200-0.68-&P#	0.68	42.5	33.5	35.5	650	442	≤25	19.0	4.6
DTM-1200-0.68-&S#	0.68	42.5	22.0	30.0	650	442	≤25	18.5	4.6
DTM-1200-0.82-&P#	0.82	42.5	33.5	35.5	650	533	≤25	20.0	3.9
DTM-1200-0.82-&S#	0.82	42.5	28.0	37.0	650	533	≤25	19.5	3.9
DTM-1200-1.0-&P#	1.0	42.5	33.5	35.5	650	650	≤25	20.5	3.4
DTM-1200-1.0-&S#	1.0	42.5	28.0	37.0	650	650	≤25	20.0	3.4
DTM-1200-1.2-&P#	1.2	42.5	33.0	45.0	650	780	≤25	23.5	3.1

特性参数

订货代码	容量 (μF)	尺寸(mm)			Du/dt ($\text{v}/\mu\text{s}$)	Ipeak (A)	Ls (nH)	IrDMS@60°C @10KHz (A)	ESR@100KHz ($\text{m}\Omega$)
		L	B	H					
Un 1200VDC , Urms 500VAC , Us 1800V									
DTM-1200-1.2-&S#	1.2	42.5	30.0	45.0	650	780	≤ 25	23.0	4.2
DTM-1200-1.5-&P#	1.5	42.5	33.0	45.0	650	975	≤ 25	25.0	4.1
DTM-1200-1.5-&S#	1.5	42.5	30.0	45.0	650	975	≤ 25	24.5	4.1
DTM-1200-2.0-&P#	2.0	57.5	30.0	45.0	455	910	≤ 35	27.0	3.6
DTM-1200-2.2-&P#	2.2	57.5	35.0	50.0	455	1001	≤ 35	30.0	3.5
DTM-1200-2.2-&S#	2.2	57.5	30.0	45.0	455	1001	≤ 35	29.5	3.5
DTM-1200-2.5-&P#	2.5	57.5	35.0	50.0	455	1138	≤ 35	31.0	3.2
DTM-1200-3.0-&P#	3.0	57.5	35.0	50.0	455	1365	≤ 35	32.0	3.1
DTM-1200-4.5-&S#	4.5	57.5	42.5	56.0	455	2047	≤ 35	33.0	3.0
Un 1500VDC , Urms 570VAC , Us 2250V									
DTM-1500-0.33-&P#	0.33	42.5	24.5	27.5	800	264	≤ 25	13.5	7.4
DTM-1500-0.39-&S#	0.39	42.5	22.0	30.0	800	312	≤ 25	13.5	7.2
DTM-1500-0.47-&P#	0.47	42.5	33.5	35.5	800	376	≤ 25	18.0	5.3
DTM-1500-0.47-&S#	0.47	42.5	28.0	37.0	800	376	≤ 25	17.5	5.3
DTM-1500-0.68-&P#	0.68	42.5	33.5	35.5	800	544	≤ 25	19.5	4.6
DTM-1500-0.68-&S#	0.68	42.5	28.0	37.0	800	544	≤ 25	19.0	4.6
DTM-1500-0.75-&P#	0.75	42.5	33.5	35.5	800	600	≤ 25	20.5	4.5
DTM-1500-1.0-&P#	1.0	42.5	33.0	45.0	800	800	≤ 25	23.0	4.5
DTM-1500-1.0-&S#	1.0	42.5	30.0	45.0	800	800	≤ 25	22.5	4.5
DTM-1500-1.2-&P#	1.2	57.5	30.0	45.0	560	672	≤ 35	25.0	4.2
DTM-1500-1.5-&P#	1.5	57.5	35.0	50.0	560	840	≤ 35	28.0	4.1
DTM-1500-1.8-&P#	1.8	57.5	35.0	50.0	560	1008	≤ 35	29.5	4.0
DTM-1500-2.5-&S#	2.5	57.5	42.5	56.0	560	1400	≤ 35	31.0	4.0
Un 1700VDC , Urms 575VAC , Us 2550V									
DTM-1700-0.22-&P#	0.22	42.5	24.5	27.5	880	194	≤ 25	13.2	10.2
DTM-1700-0.22-&S#	0.22	42.5	17.0	28.0	880	194	≤ 25	13.0	10.2
DTM-1700-0.33-&P#	0.33	42.5	24.5	27.5	880	290	≤ 25	14.0	7.9
DTM-1700-0.33-&S#	0.33	42.5	22.0	30.0	880	290	≤ 25	13.5	7.9
DTM-1700-0.47-&P#	0.47	42.5	33.5	35.5	880	413	≤ 25	19.0	5.6
DTM-1700-0.47-&S#	0.47	42.5	28.0	37.0	880	413	≤ 25	18.5	5.6
DTM-1700-0.56-&P#	0.56	42.5	33.5	35.5	880	492	≤ 25	19.5	5.5
DTM-1700-0.56-&S#	0.56	42.5	28.0	37.0	880	492	≤ 25	19.0	5.5
DTM-1700-0.68-&P#	0.68	42.5	33.5	35.5	880	598	≤ 25	20.0	5.4
DTM-1700-0.82-&P#	0.82	42.5	33.0	45.0	880	721	≤ 25	22.1	5.4
DTM-1700-0.82-&S#	0.82	42.5	30.0	45.0	880	721	≤ 25	19.5	5.4
DTM-1700-1.0-&P#	1.0	57.5	30.0	45.0	610	610	≤ 35	23.5	5.3
DTM-1700-1.2-&P#	1.2	57.5	30.0	45.0	610	732	≤ 35	26.2	4.5
DTM-1700-1.5-&P#	1.5	57.5	35.0	50.0	610	915	≤ 35	28.5	3.7
DTM-1700-2.2-&S#	2.2	57.5	42.5	56.0	610	1342	≤ 35	30.0	3.5
Un 2000VDC , Urms 630VAC , Us 3000V									
DTM-2000-0.10-&P#	0.10	42.5	24.5	27.5	1000	100	≤ 25	8.0	25.7
DTM-2000-0.10-&S#	0.10	42.5	15.0	26.0	1000	100	≤ 25	7.5	25.7
DTM-2000-0.15-&P#	0.15	42.5	24.5	27.5	1000	150	≤ 25	10.5	14.7
DTM-2000-0.15-&S#	0.15	42.5	17.0	28.0	1000	150	≤ 25	10.0	14.7
DTM-2000-0.22-&P#	0.22	42.5	24.5	27.5	1000	220	≤ 25	12.0	10.5
DTM-2000-0.22-&S#	0.22	42.5	22.0	30.0	1000	220	≤ 25	11.5	10.5
DTM-2000-0.33-&P#	0.33	42.5	33.5	35.5	1000	330	≤ 25	16.5	9.5
DTM-2000-0.33-&S#	0.33	42.5	28.0	37.0	1000	330	≤ 25	16.0	9.5
DTM-2000-0.39-&P#	0.39	42.5	33.5	35.5	1000	390	≤ 25	17.5	6.7
DTM-2000-0.39-&S#	0.39	42.5	28.0	37.0	1000	390	≤ 25	17.0	6.7
DTM-2000-0.47-&P#	0.47	42.5	33.0	45.0	1000	470	≤ 25	20.5	5.2

特性参数

订货代码	容量 (μF)	尺寸(mm)			Du/dt ($\text{V}/\mu\text{s}$)	Ipeak (A)	Ls (nH)	IrDMS@60°C @10KHz (A)	ESR@100KHz ($\text{m}\Omega$)
		L	B	H					
Un 2000VDC , Urms 630VAC , Us 3000V									
DTM-2000-0.47-&S#	0.47	42.5	28.0	37.0	1000	470	≤ 25	20.0	5.2
DTM-2000-0.56-&P#	0.56	42.5	33.0	45.0	1000	560	≤ 25	21.5	4.3
DTM-2000-0.68-&P#	0.68	57.5	30.0	45.0	700	476	≤ 35	22.5	5.7
DTM-2000-0.82-&P#	0.82	57.5	30.0	45.0	700	574	≤ 35	24.0	4.5
DTM-2000-1.0-&P#	1.0	57.5	35.0	50.0	700	700	≤ 35	27.0	4.5
DTM-2000-1.2-&P#	1.2	57.5	35.0	50.0	700	840	≤ 35	29.0	4.2
DTM-2000-1.8-&S#	1.8	57.5	42.5	56.0	700	1260	≤ 35	31.0	4.0
Un 2500VDC , Urms 700VAC , Us 3750V									
DTM-2500-0.10-&P#	0.10	42.5	24.5	27.5	1350	135	≤ 25	9.0	18.7
DTM-2500-0.15-&S#	0.15	42.5	22.0	30.0	1350	202	≤ 25	10.5	13.5
DTM-2500-0.22-&S#	0.22	42.5	28.0	37.0	1350	297	≤ 25	14.5	10.2
DTM-2500-0.33-&S#	0.33	42.5	33.0	45.0	1350	445	≤ 25	18.0	7.8
DTM-2500-0.47-&S#	0.47	57.5	30.0	45.0	945	444	≤ 35	22.0	6.2
DTM-2500-0.56-&P#	0.56	57.5	30.0	45.0	945	530	≤ 35	22.5	6.2
DTM-2500-0.68-&P#	0.68	57.5	35.0	50.0	945	642	≤ 35	25.0	5.5
DTM-2500-0.75-&P#	0.75	57.5	35.0	50.0	945	709	≤ 35	25.5	5.1
DTM-2500-1.0-&S#	1.0	57.5	42.5	56.0	945	945	≤ 35	28.0	4.8
Un 3000VDC , Urms 750VAC , Us 4500V									
DTM-3000-0.047-&P#	0.047	42.5	24.5	27.5	1600	75	≤ 25	7.4	31.6
DTM-3000-0.047-&S#	0.047	42.5	15.0	26.0	1600	75	≤ 25	7.0	31.6
DTM-3000-0.068-&P#	0.068	42.5	24.5	27.5	1600	108	≤ 25	9.0	22.7
DTM-3000-0.068-&S#	0.068	42.5	17.0	28.0	1600	108	≤ 25	8.5	22.7
DTM-3000-0.10-&P#	0.10	42.5	33.5	35.5	1600	160	≤ 25	12.0	15.0
DTM-3000-0.10-&S#	0.10	42.5	22.0	30.0	1600	160	≤ 25	11.5	15.0
DTM-3000-0.15-&P#	0.15	42.5	33.5	35.5	1600	240	≤ 25	14.5	10.8
DTM-3000-0.15-&S#	0.15	42.5	28.0	37.0	1600	240	≤ 25	14.0	10.8
DTM-3000-0.22-&P#	0.22	42.5	33.0	45.0	1600	352	≤ 25	17.6	6.6
DTM-3000-0.22-&S#	0.22	42.5	30.0	45.0	1600	352	≤ 25	17.0	6.6
DTM-3000-0.33-&P#	0.33	57.5	30.0	45.0	870	288	≤ 35	21.0	7.5
DTM-3000-0.47-&P#	0.47	57.5	35.0	50.0	870	408	≤ 35	23.0	7.5
DTM-3000-0.56-&S#	0.56	57.5	35.0	50.0	870	487	≤ 35	23.0	7.4
DTM-3000-0.82-&S#	0.82	57.5	42.5	56.0	870	714	≤ 35	26.0	7.0

DTM 焊片说明

焊片尺寸适用于 B. K. U. C. UF. CF.R. G.T.TF. E .N. D 等片型，根据安装方式选择相应的规格
 订货代码含有 2 个变量，对于相应的选择规格：

订货代码：

DTM - 1200 - 0.47 -

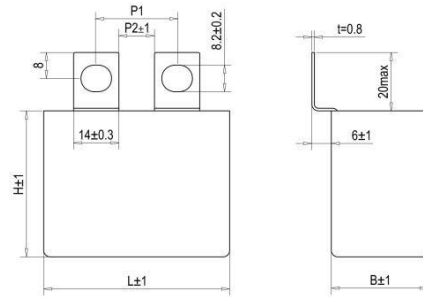
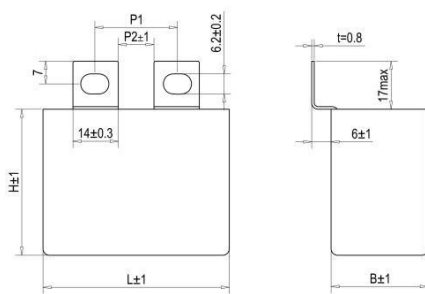
& P #



P2 片距

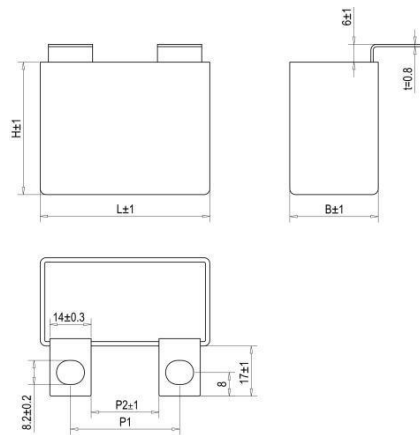
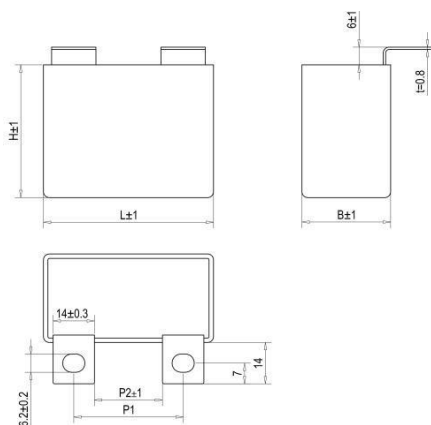
焊片代码：B. K. U. C. UF. CF. N.
 R. G. T. TF. E. D 等

安装孔尺寸和焊片间距(mm)



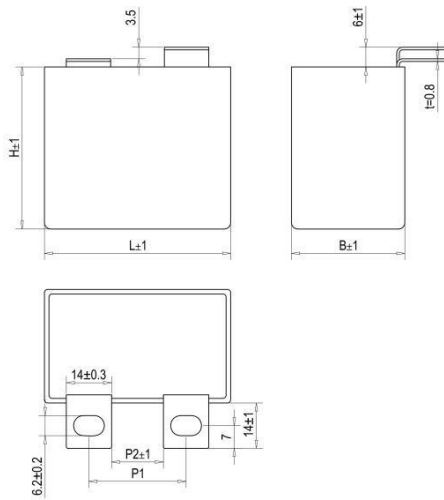
L	焊片 B 安装孔径 : M6			
	P2	P1	P2	P1
42.5	11	23-28	8	20-25
57.5	11	23-28	24	36-41

L	焊片 K 安装孔径 : M8			
	P2	P1	P2	P1
42.5	11	24-26	8	21-23
57.5	11	24-26	24	37-39

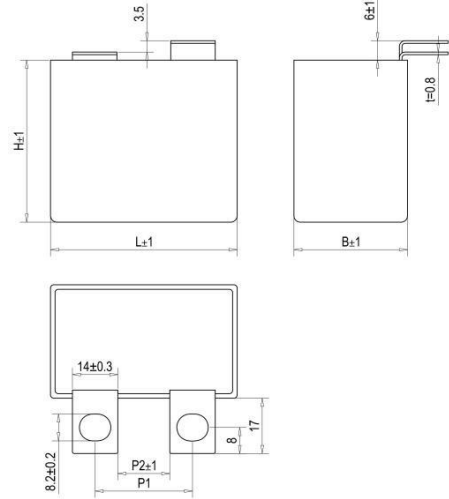


L	焊片 U 安装孔径 : M6			
	P2	P1	P2	P1
42.5	11	23-28	8	20-25
57.5	11	23-28	24	36-41

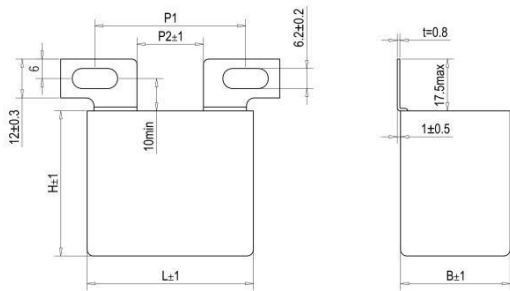
L	焊片 C 安装孔径 : M8			
	P2	P1	P2	P1
42.5	11	24-26	8	21-23
57.5	11	24-26	24	37-39



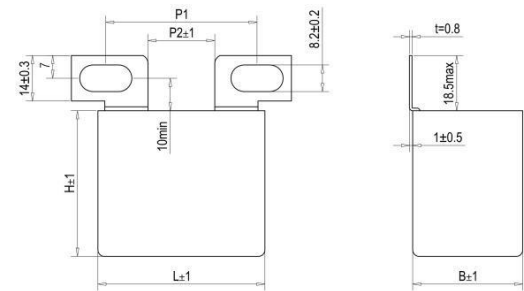
L	焊片 UF 安装孔径 : M6			
	P2	P1	P2	P1
42.5	11	23-28	8	20-25
57.5	11	23-28	24	36-41



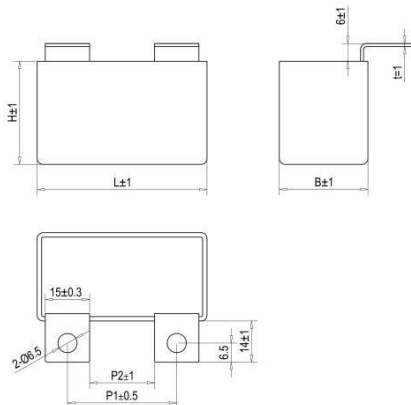
L	焊片 CF 安装孔径 : M8			
	P2	P1	P2	P1
42.5	11	24-26	8	21-23
57.5	11	24-26	24	37-39



L	焊片 R 安装孔径 : M6			
	P2	P1	P2	P1
42.5	11	29-41	15	33-45
57.5	11	29-41	15	33-45
			28	46-58

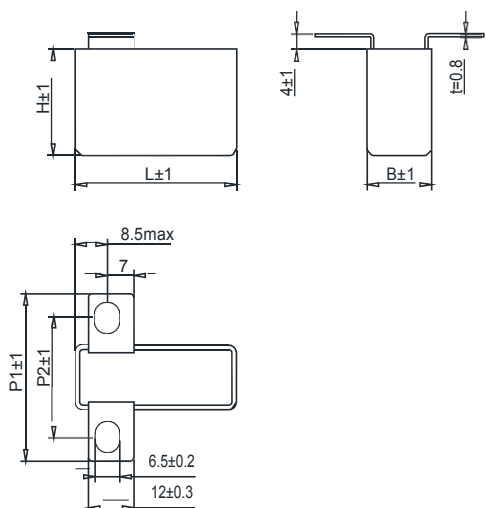


L	焊片 G 安装孔径 : M8			
	P2	P1	P2	P1
42.5	8	33-42	15	40-49
57.5	15	40-49	24	49-58
			28	53-62

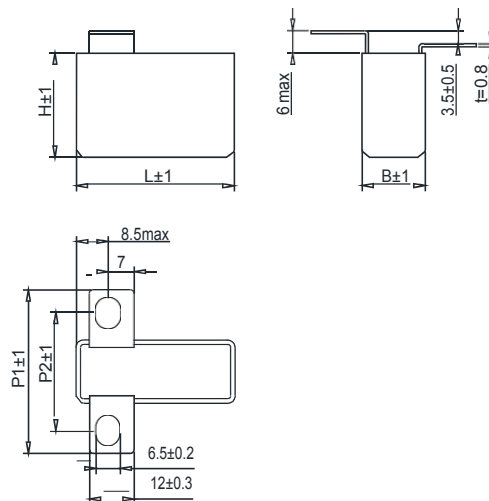


L	焊片 N 安装孔径 : M6	
	P2	P1
42.5	8	23
57.5	13	28
	22	37

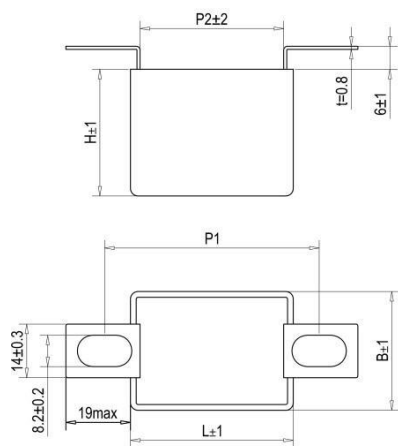
9. DTM 焊片尺寸说明



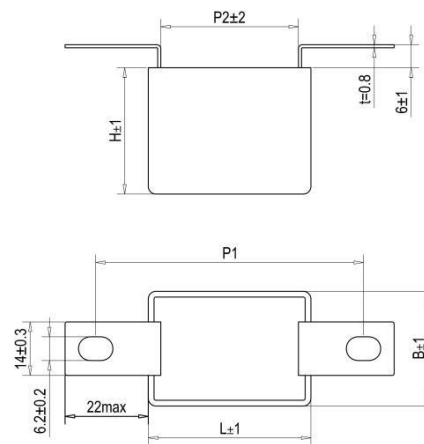
B	焊片 T 安装孔径 : M6	
	P2	P1
15	30	42
17	32	44



B	焊片 TF 安装孔径 : M6	
	P2	P1
15	30	42
17	32	44



L	焊片 E 安装孔径 : M8	
	P2	P1
42.5	37	50-64
57.5	52	65-79



L	焊片 D 安装孔径 : M6	
	P2	P1
42.5	37	67-73
57.5	52	82-88

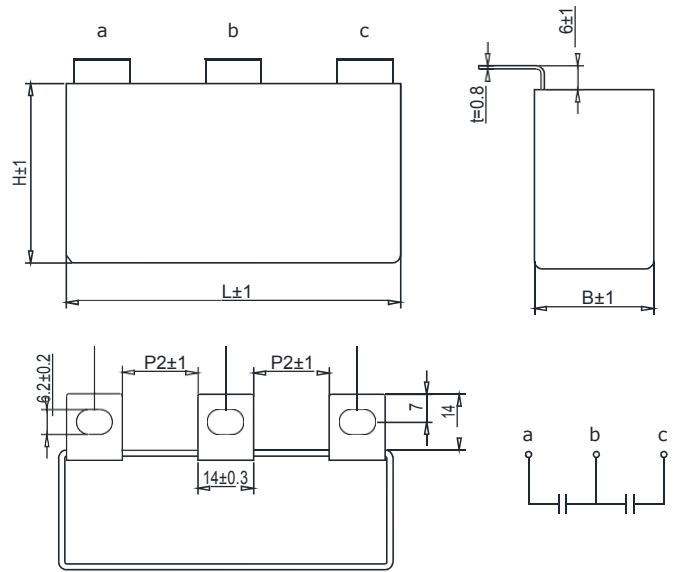
产品特点

引用标准 : IEC 61071
 介质 : 金属化聚丙烯薄膜
 结构 : 干式无感结构, 塑料外壳封装, 树脂填充 (UL94 V-0)

电气特性

工作温度 : -40 °C 至 +105 °C
 容量范围 : 2×0.22 至 2×3.0 μF
 额定电压 : 700 至 1700 VDC
 容量偏差 : ±5%, ±10%
 损耗因素 : $\leq 6 \times 10^{-4}$ @ 1KHz, 20±5 °C
 预期寿命 : 100,000 小时 @ Un, 70 °C (热点温度)
 极间耐压 : 1.5Un (DC) @ 10s, 20±5 °C
 极壳耐压 : (1.5Un+1000)VAC, 最小 3000VAC (10s, 50Hz)
 绝缘电阻 : (IR×Cn) 30000s (不超过 30GΩ), 100VDC (20±5 °C), 1 分钟

应用 三电平 IGBT 突波吸收 嵌位



安装孔尺寸和焊片间距(mm)

焊片 U 安装孔径 : M6

P2	P1	P2	P1
11	23-28	19	31-36

特性参数

订货代码	容量 (μF)	尺寸(mm)			Du/dt (v/μs)	Ipeak (A)	Ls (nH)	IrDMS@60°C @10KHz (A)	ESR@100KHz (mΩ)
		L	B	H					
Un 700VDC , Urms 380VAC , Us 1050V									
DTM-700-2×1.0-UP#	2×1.0	72.5	30.0	45.0	325	325	≤35	2×16.9	2×3.2
DTM-700-2×1.2-UP#	2×1.2	72.5	30.0	45.0	325	390	≤35	2×17.5	2×3.0
DTM-700-2×1.5-UP#	2×1.5	72.5	30.0	45.0	325	488	≤35	2×18.5	2×2.7
DTM-700-2×2.0-UP#	2×2.0	72.5	30.0	45.0	325	650	≤35	2×19.7	2×2.3
DTM-700-2×2.2-UP#	2×2.2	72.5	30.0	45.0	325	715	≤35	2×20.4	2×2.2
DTM-700-2×2.5-UP#	2×2.5	84.0	30.0	45.0	325	813	≤35	2×22.5	2×2.0
DTM-700-2×3.0-UP#	2×3.0	84.0	30.0	45.0	325	975	≤35	2×23.9	2×1.8
Un 1200VDC , Urms 500VAC , Us 1800V									
DTM-1200-2×0.47-UP#	2×0.47	72.5	30.0	45.0	650	306	≤35	2×14.3	2×4.5
DTM-1200-2×0.56-UP#	2×0.56	72.5	30.0	45.0	650	364	≤35	2×15.3	2×3.9
DTM-1200-2×0.68-UP#	2×0.68	72.5	30.0	45.0	650	442	≤35	2×16.5	2×3.3
DTM-1200-2×0.82-UP#	2×0.82	72.5	30.0	45.0	650	533	≤35	2×17.2	2×3.1
DTM-1200-2×1.0-UP#	2×1.0	72.5	30.0	45.0	650	650	≤35	2×18.1	2×2.8
DTM-1200-2×1.2-UP#	2×1.2	84.0	30.0	45.0	650	780	≤35	2×20.5	2×2.4
DTM-1200-2×1.5-UP#	2×1.5	84.0	30.0	45.0	650	975	≤35	2×21.8	2×2.2
Un 1700VDC , Urms 575VAC , Us 2550V									
DTM-1700-2×0.22-UP#	2×0.22	72.5	30.0	45.0	880	194	≤35	2×11.6	2×6.7
DTM-1700-2×0.33-UP#	2×0.33	72.5	30.0	45.0	880	290	≤35	2×13.2	2×5.2
DTM-1700-2×0.47-UP#	2×0.47	72.5	30.0	45.0	880	414	≤35	2×15.1	2×4.0
DTM-1700-2×0.56-UP#	2×0.56	72.5	30.0	45.0	880	493	≤35	2×16.2	2×3.5
DTM-1700-2×0.68-UP#	2×0.68	72.5	30.0	45.0	880	598	≤35	2×17.2	2×3.1
DTM-1700-2×0.82-UP#	2×0.82	84.0	30.0	45.0	880	722	≤35	2×19.6	2×2.7
DTM-1700-2×1.0-UP#	2×1.0	84.0	30.0	45.0	880	880	≤35	2×20.3	2×2.5